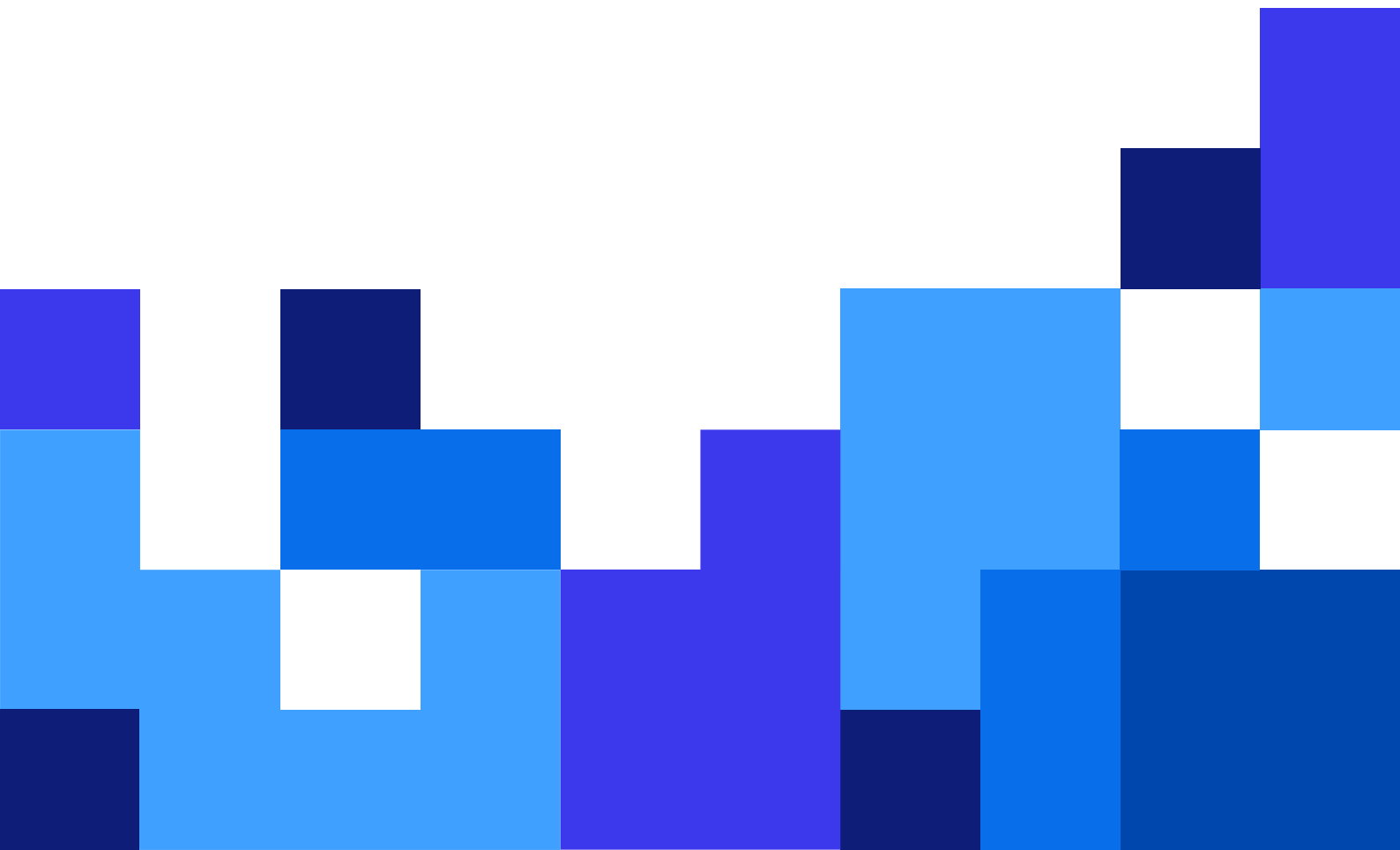


# NiceLabel 10 Installation Guide

Rev-2021-10



# Table of Contents

<b>1. Setup Procedure</b> .....	<b>3</b>
1.1. System Requirements .....	3
1.2. Introductory Setup Steps .....	3
1.3. Free Trial Setup .....	5
1.4. Setup with License Key Or Hardware Key .....	7
1.5. Setup with Control Center .....	11
1.6. Setup with NiceLabel Cloud Subscription .....	12
1.7. Post-trial Options .....	15
1.8. Version Update .....	16
1.9. Enforcing Configuration Options .....	18
1.10. Silent installation .....	19
<b>2. NiceLabel 10 Licensing</b> .....	<b>20</b>
2.1. Licensing Options .....	20
2.2. License Key Activation .....	22
2.2.1. License Activation Dialog .....	22
2.2.2. Offline Activation .....	25
2.3. License Upgrade .....	28
2.3.1. Upgrade Types .....	29
2.3.2. Product Edition Upgrade .....	29
2.3.3. Version Upgrade .....	30
2.3.3.1. Upgrading the existing installation .....	30
2.3.3.2. Installing and activating NiceLabel 10 with upgrade key .....	31
2.3.4. Upgraded Number of Printers .....	33
2.3.5. Offline Upgrade .....	33
<b>3. Installation of Printer Drivers</b> .....	<b>36</b>
<b>4. Deactivating Software</b> .....	<b>37</b>
4.1. License Deactivation Procedure .....	37
4.2. Moving the Software License to Another Computer .....	38
4.2.1. Moving Hardware Activation .....	38
4.2.2. Moving Software Activation .....	38

# 1. Setup Procedure

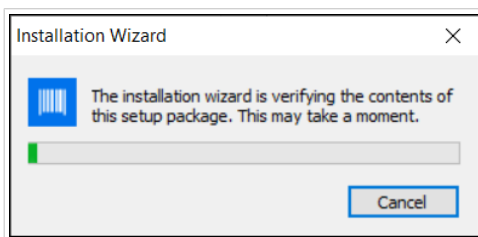
## 1.1. System Requirements

Before you start your installation process, always double-check for the latest [system requirements](#).

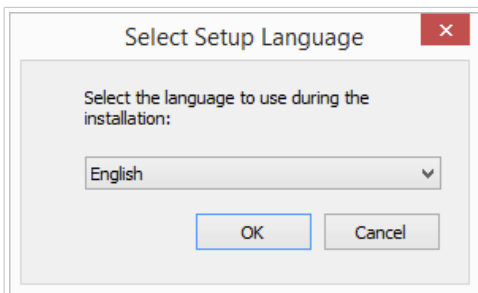
## 1.2. Introductory Setup Steps

Complete these steps to install NiceLabel 10 on your computer.

1. Download the software package or insert the DVD into your DVD drive. Run **NiceLabel10.exe**. The installer verifies the installation package content.



2. Select installation language from the drop-down list and click **OK**.



### NOTE

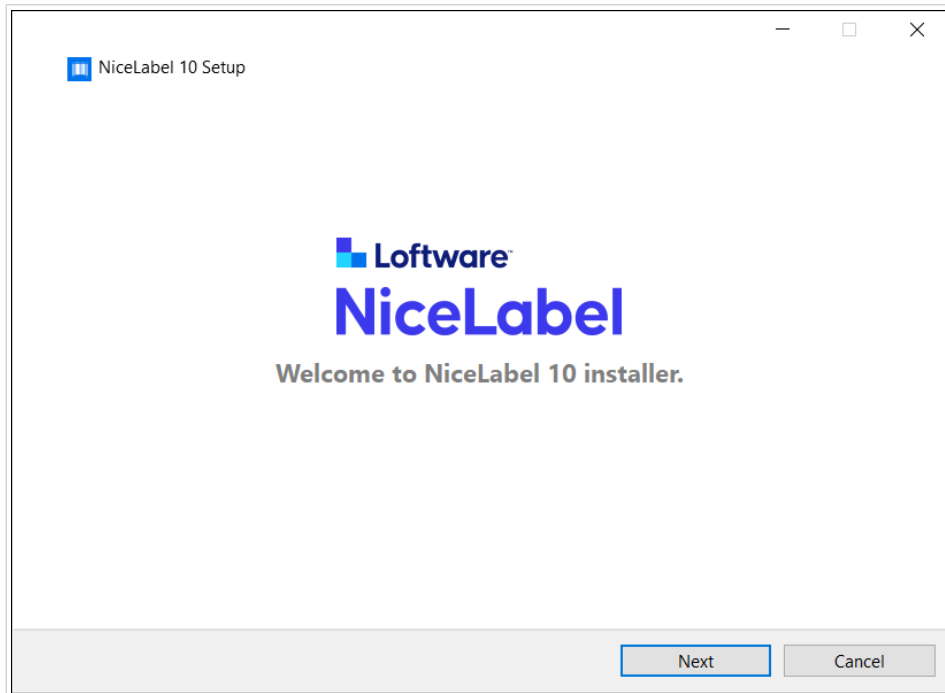
Language selection determines the interface language of the installed NiceLabel 10 program.

3. NiceLabel 10 Setup dialog window opens automatically. Click **Next**.

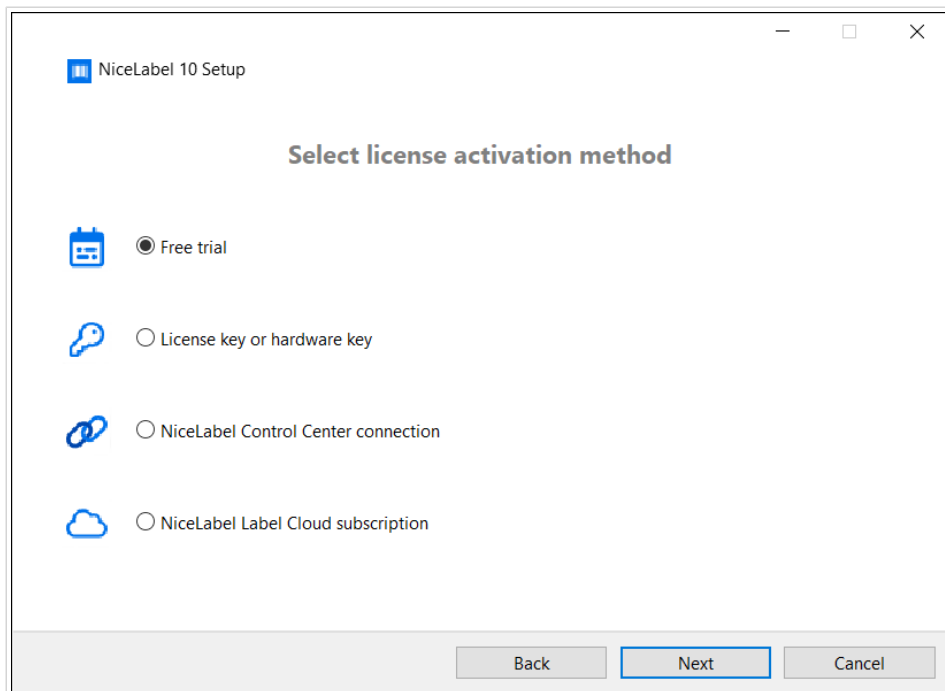


### NOTE

If the installation wizard does not start automatically, double-click **NiceLabel10.exe** in the downloaded file package or in the DVD file folders.



4. Read and accept the **End User License Agreement**.  
Click **Next**.
5. Select the license activation method. These options are available:



- **Free Trial**. Free trial allows you to use and evaluate the software for 30 days. After the completed trial period, you have to purchase and enter the license key to continue with your work.
- **Activate license**. Choose among these options:

- Setup with [License Or Hardware Key](#). Use this option if you have already purchased and received the product license key. The entered license key determines which product edition of the installed NiceLabel 10 software is going to be fully functional after the finished setup.
- Setup with [NiceLabel Control Center connection](#). Use this option if you have a running Control Center in your company and wish to activate your copy of NiceLabel 10 with the same license key. This also adds your installed copy to your company's Label Management System (LMS).
- [NiceLabel Cloud](#) subscription. This option installs NiceLabel 10 on your computer and establishes a connection with NiceLabel Cloud.

## 1.3. Free Trial Setup

1. Complete the [Introductory Setup Steps](#).
2. Select the modules you wish to install.

3. Select how you are going to run Automation.



### TIP

This step is necessary only if you decide to install NiceLabel Automation.

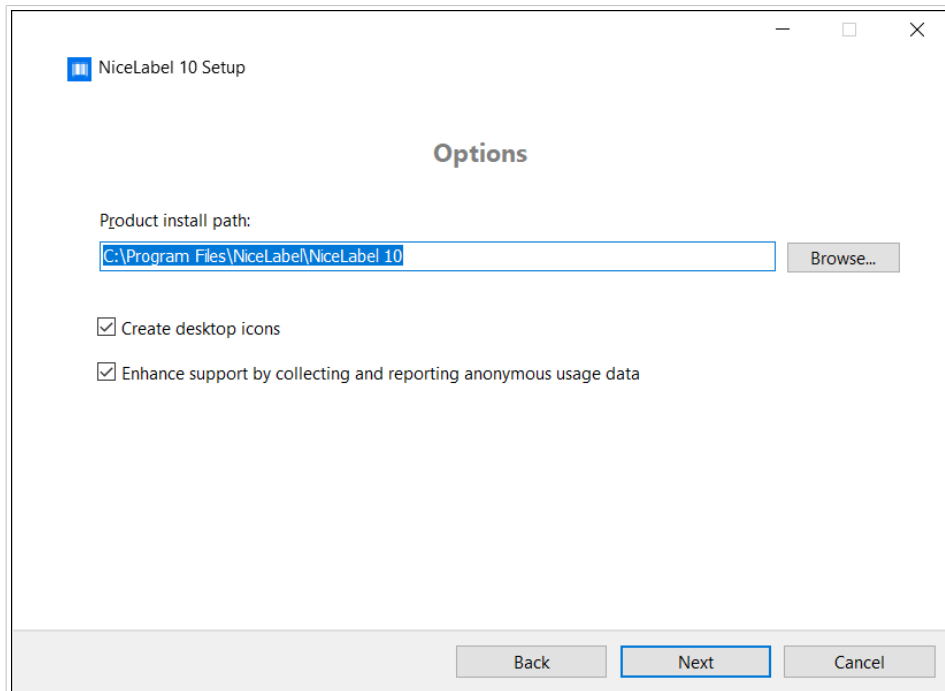
Type in the account under which the Windows services are going to run. Make sure you use an account with access to printer drivers and label files. These files must be accessible even if they belong to network shared resources.



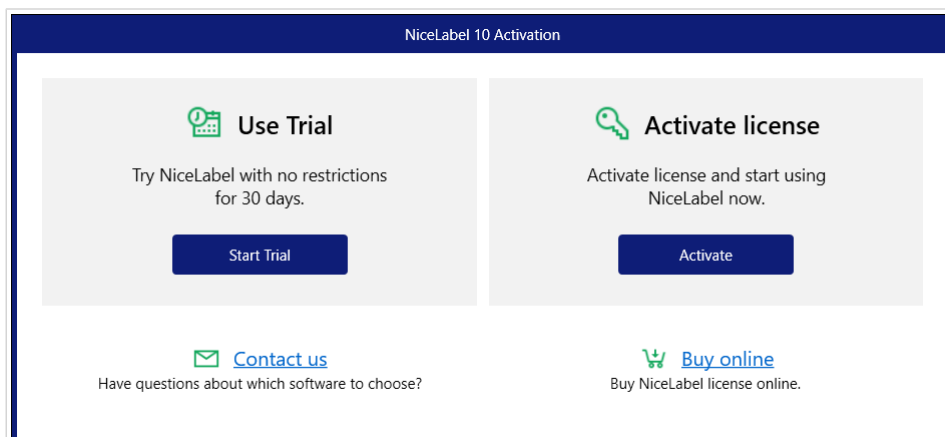
## NOTE

We recommend using standard or administrative user accounts. The Local System Account has limited access to network shared files and printers. It requires additional work when setting up printers to make them work correctly.

4. Define the installation path and decide if you want to share your usage data with NiceLabel or not. Anonymous usage data helps NiceLabel improve the applications and therefore increase your productivity.



5. Click **Next** to continue. You are ready to install NiceLabel 10.
6. Start the installation. Click **Install**.
7. Run NiceLabel 10. The initial trial dialog window opens:

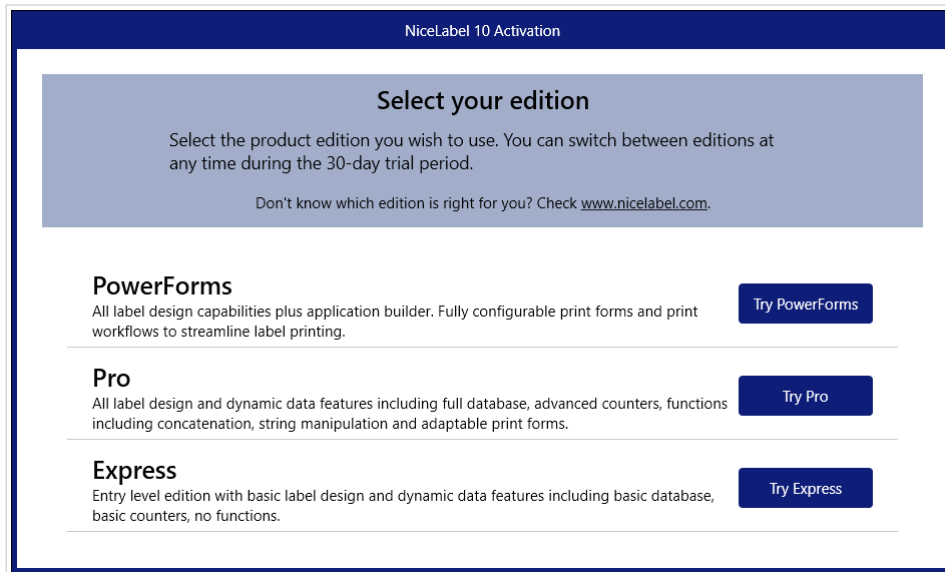


These options are available:

- Click **Start Trial** to start with your 30 days trial period.

- Click **Activate** to activate your purchased license. Activation enables you to start using the software without time limitations. Read about your activation options in the following sections:
  - [Setup with License Key Or Hardware Key](#)
  - [Setup with Control Center](#)
  - [Setup with NiceLabel Cloud Subscription](#)

8. After clicking **Start Trial**, the NiceLabel 10 product level selection dialog window appears:



9. Select which product level you wish to evaluate:

- **PowerForms** allows you to design responsive labels and print forms that streamline printing and eliminate errors. This is the most comprehensive product level with the richest feature set.
- **Pro** allows you to design and print responsive labels with dynamic content. For demanding users.
- **Express** allows you to quickly design and print universal label templates. Simplicity and efficiency are the main characteristics of this product level.

The NiceLabel 10 landing page opens. After you decide to activate NiceLabel 10, click **Activate License** in the **Software Information** section. This opens the [NiceLabel 10 activation dialog](#).

## 1.4. Setup with License Key Or Hardware Key

1. Complete the [Introductory Setup Steps](#).
2. Enter your **License key**. Your license key is included in the email that was sent to you after completing the purchase or in the product package.  
The alternative is to select **License is on a hardware key** option. An additional way of distributing the license keys is sending them on USB drives.

USB drive carries licensing information for your copy of NiceLabel 10. Plug the USB drive into your computer and click **Next**.



### NOTE

Hardware key can only be used for single-user licenses. As a result, only Designer module is installed during a hardware key setup of NiceLabel 10.

NiceLabel 10 Setup

### Enter License Key

If you have already purchased your product and received a license key, please enter it in the box below. Or choose the hardware key if you have received your key on a USB Dongle.

Enter license key

License key:

License is on a hardware key (USB Dongle)

Back Next Cancel



### TIP

In specific deployment cases – i.e. when installing NiceLabel 10 in multi-user environments – license key can be read from the installation file name. To achieve this, rename the installation file using the following format: **Setup\_XXXX-XXXX-XXXX-XXXX-XXXX.exe** ("X" marks the license key characters). NiceLabel 10 is automatically configured to use this license.



### NOTE

The Automation module is deselected by default if you install NiceLabel 10 using a hardware key.

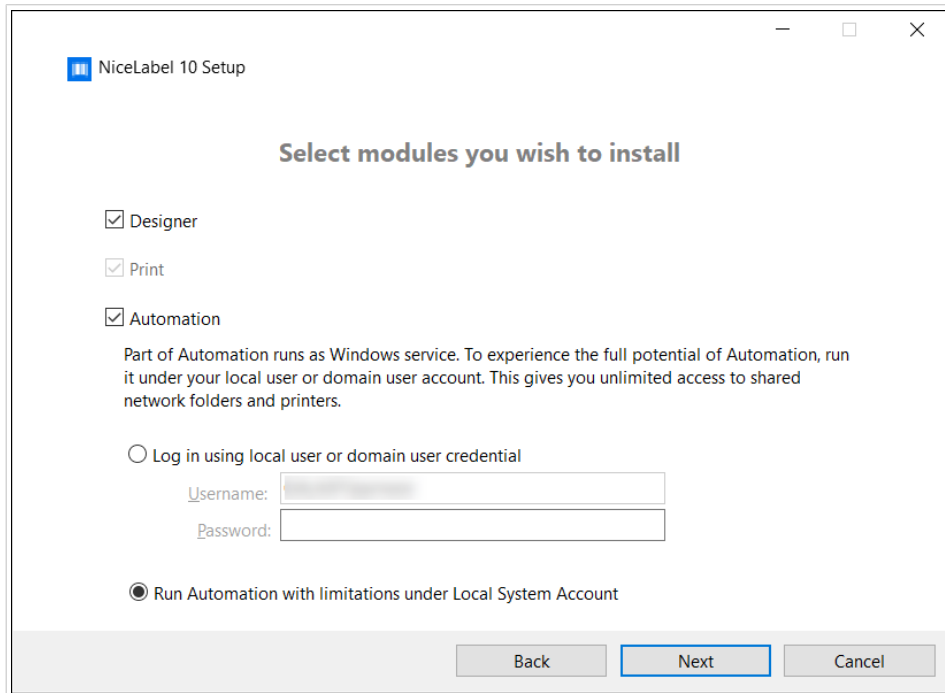


### NOTE

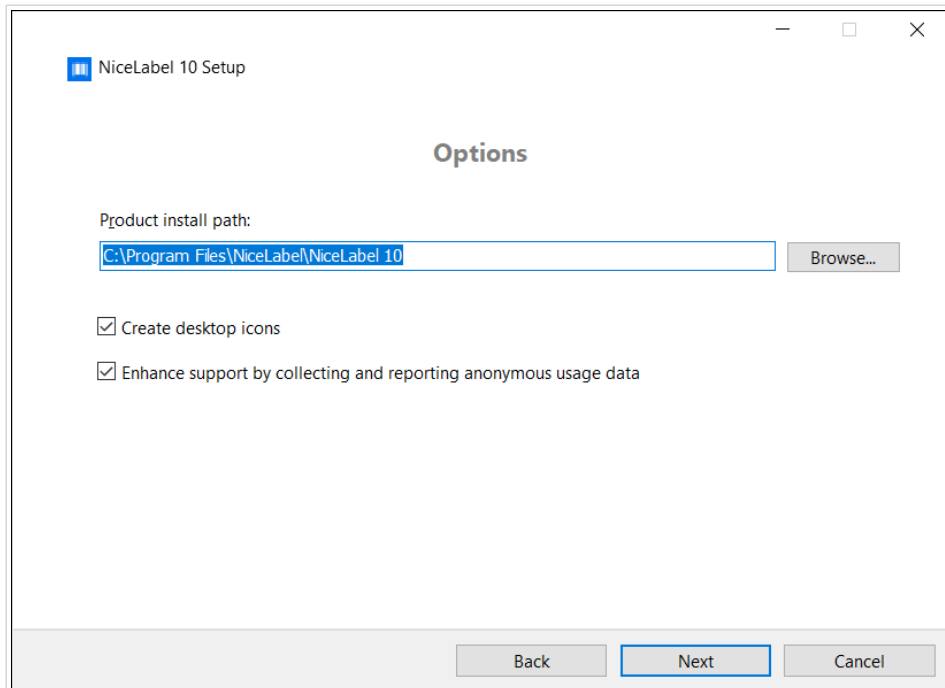
The previously entered license key determines which product levels run in trial mode and which without time limitations. It also defines which NiceLabel Designer product level (Express, Pro, or PowerForms) is available for use.

3. Select the modules you wish to install.





4. Define installation path and decide if you want to share your usage data with NiceLabel or not. Anonymous usage data helps NiceLabel improve the applications and therefore increase your productivity.



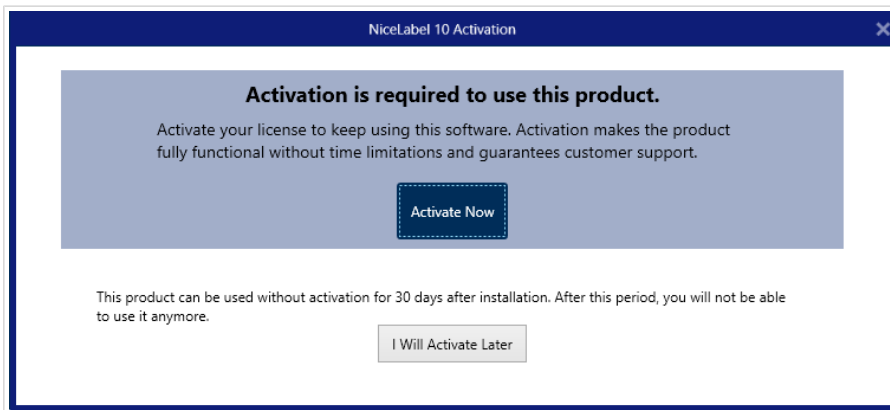
5. Click **Next** to continue. You are ready to install NiceLabel 10.
6. Click **Install**. The installation begins.
7. Run NiceLabel 10. If your license is a Label Management System (LMS) license, the Connect to Control Center window opens. Use this window to connect to your Control Center.

## Example

<http://yourcontrolcenter/EPM/>

The following options appear:

- Click **Activate Now** to enter the [License Activation Dialog](#) and to activate your copy of software immediately (recommended).
- Click the **I Will Activate Later** button under the **Proceed Without Activation** option. You will be allowed to use the software without limitations for 30 days. Step number 7 above describes the options if no activation takes place in 30 days.



### NOTE

Activation is required to work with the software without time limitations. It also enables NiceLabel company to provide you with customized support and help.

8. After 30 days without activation, you will be prompted to activate your NiceLabel 10 license.



Click **Activate Your License** to proceed to the [License Activation Dialog](#).



### NOTE

If NiceLabel 10 has been installed with a predefined product level (a specific installer file has been used), product level selection is not required during the first start.

## 1.5. Setup with Control Center

If you are running the NiceLabel Label Management System (on-premises LMS) in your company, you can activate your copy of NiceLabel 10 by connecting to your Control Center. This also pairs your NiceLabel 10 installation with Control Center and makes it part of your company's LMS.

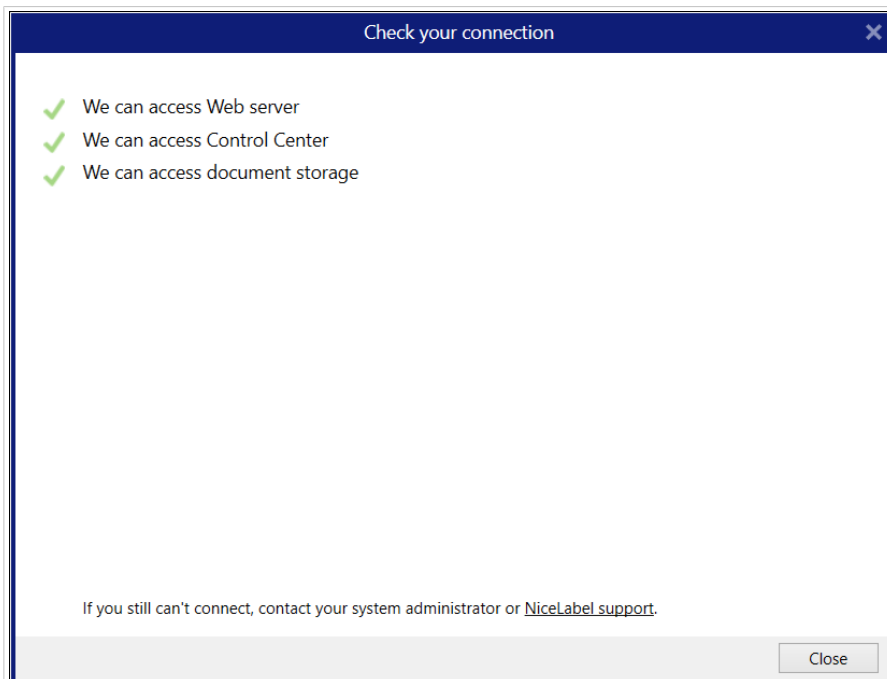


### NOTE

You cannot connect and activate NiceLabel 10 using an inactive Control Center. Activate Control Center first.

Read more about the benefits of using NiceLabel LMS [here](#).

1. Complete the [Introductory Setup Steps](#).
2. After the NiceLabel 10 activation window opens, click **Activate**.
3. Type the URL address of your Control Center. To check if your Control Center is accessible, click **Check connection**.
  - The **Check your connection window** opens.
  - The status indications tell you if your Control Center is accessible or not.



### NOTE

To connect to your Control Center, you need a working Internet connection. If your Control Center is behind a firewall, open the outbound ports.



## NOTE

If you are experiencing connection issues, follow instructions from the dialog.

4. Click **Connect**. Your NiceLabel 10 is now active and ready.



## IMPORTANT

If your Control Center uses the application authentication, the sign-in window appears first. Authenticate yourself using your Control Center credentials.

Application authentication

Log in to use the application:

User name: admin

Password: ●●●●●●

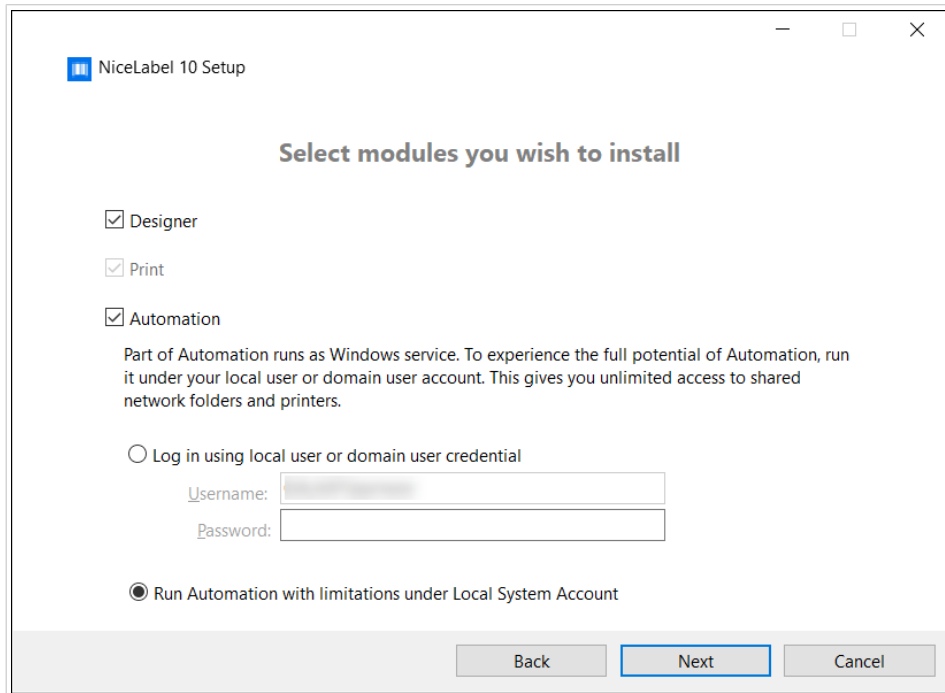
Show password

Log in Cancel

## 1.6. Setup with NiceLabel Cloud Subscription

If you are planning to use the NiceLabel 10 as a part of NiceLabel Cloud, make sure you already have your NiceLabel Cloud account.

1. Complete [Introductory Setup Steps](#).
2. Select the modules you wish to install.



3. Select how you are going to run Automation.



#### TIP

This step is necessary only if you decide to install NiceLabel Automation.

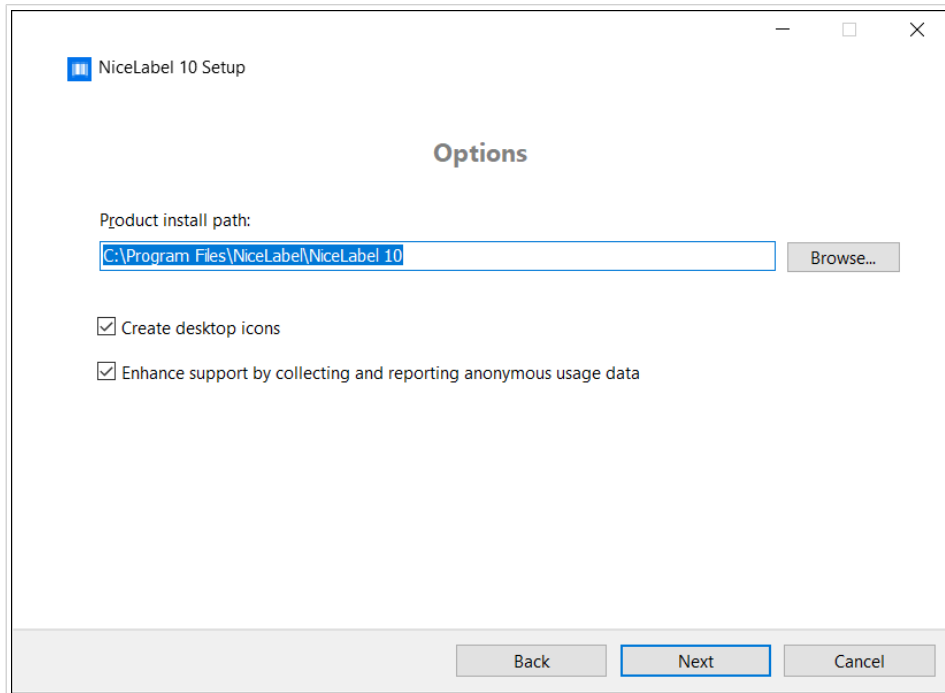
Type in the account under which the Windows services are going to run. Make sure you use an account with access to printer drivers and label files. These files must be accessible even if they belong to network shared resources.



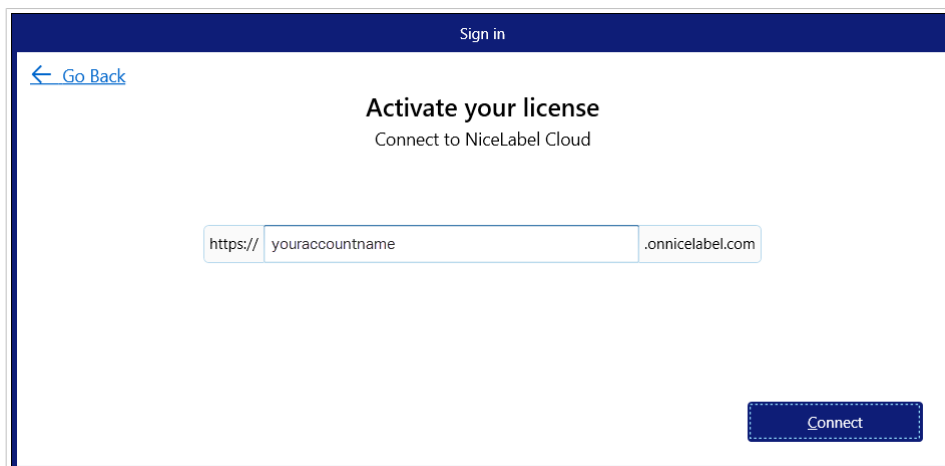
#### NOTE

We recommend using standard or administrative user accounts. The Local System Account has limited access to network shared files and printers. It requires additional work when setting up printers to make them work correctly.

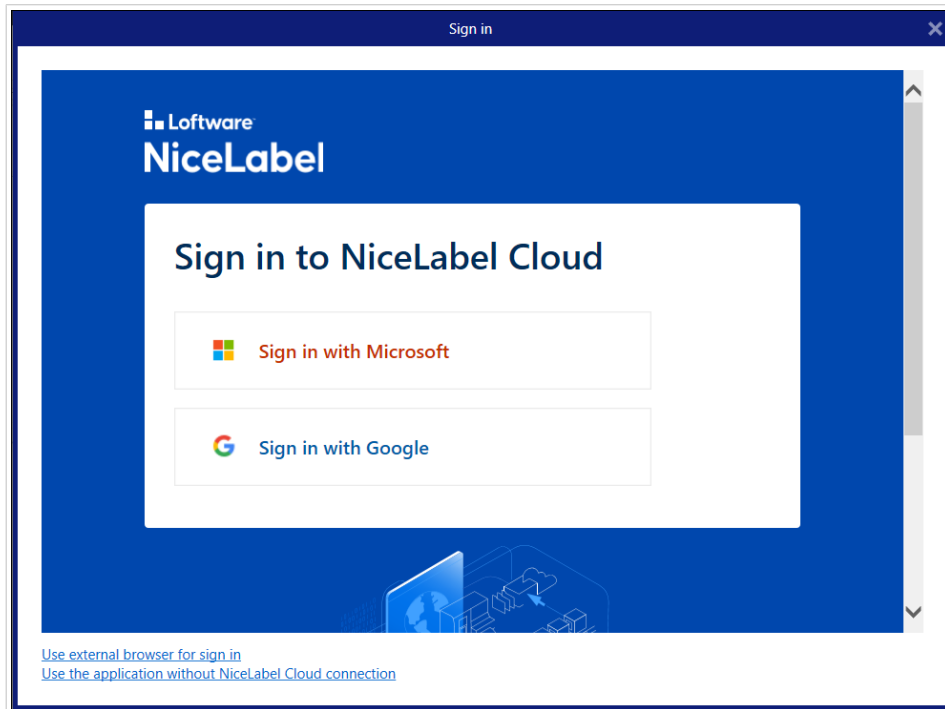
4. Define installation path and decide if you want to share your usage data with NiceLabel or not. Anonymous usage data helps NiceLabel improve the applications and therefore increase your productivity.



5. Click **Next**. You are ready to start installing your NiceLabel 10.
6. Click **Install**. The installation starts.
7. When the installation completes, click **Close**.
8. Run NiceLabel 10. The NiceLabel Cloud Sign-in window opens.
9. Type your NiceLabel Cloud name and click **Connect**.



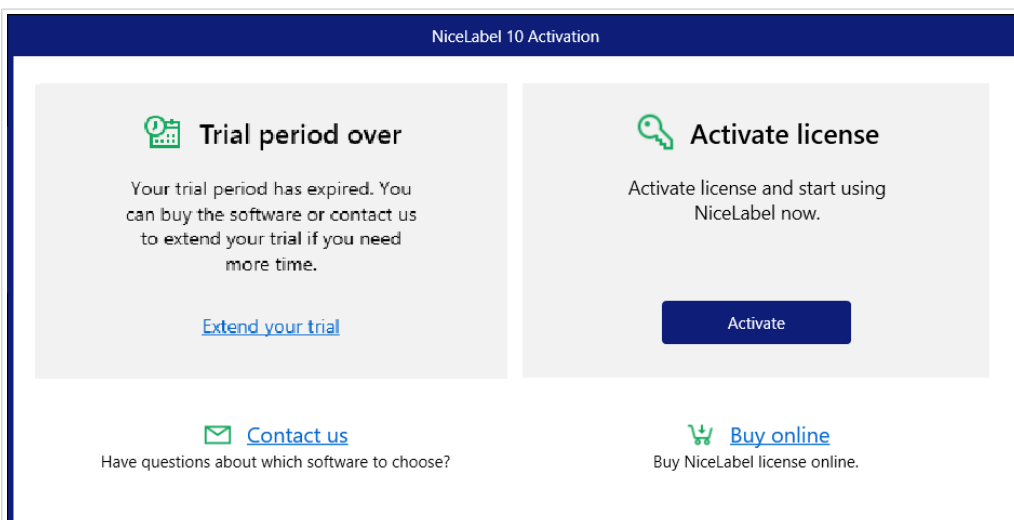
10. Sign in to your NiceLabel Cloud using Microsoft or Google account. Use the account you already have for your NiceLabel Cloud.



11. Follow the on-screen instructions. Your NiceLabel 10 connects to the NiceLabel Cloud. You are ready to start designing labels and solutions.

## 1.7. Post-trial Options

The free trial allows you to use and evaluate the software for 30 days. After 30 days, the trial period ends. This means that you can no longer use NiceLabel 10 software without purchasing the license and activating the license key.



When opening NiceLabel 10 in the post-trial time period, the below-displayed dialog window appears. The following options are available:

- Click **Extend Your Trial** to prolong the trial period if you need additional time to evaluate the software. Click **Extend Your Trial** to fill out an online form. NiceLabel support will inform you about the trial extension in the shortest possible amount of time.
- Click **Activate** to activate your purchased license. Choose how to activate your license:
  - [Section 1.4, “Setup with License Key Or Hardware Key”](#). Use this option if you have already purchased and received the product license key. The entered license key determines which product edition of the installed NiceLabel 10 software is going to be fully functional after the finished setup.
  - [Section 1.5, “Setup with Control Center”](#). Use this option if you have a running Control Center in your company and wish to activate your copy of NiceLabel 10 with the same license key. This also adds your installed copy to your company’s Label Management System.
  - [NiceLabel Cloud](#) subscription. This option installs NiceLabel 10 on your computer and establishes connection with NiceLabel Cloud.

## 1.8. Version Update

The set of NiceLabel 10 features is constantly expanding. NiceLabel recommends you to always install and use the latest available version of NiceLabel 10. To achieve this, update your existing installed version with the latest one. New versions are regularly published and distributed.

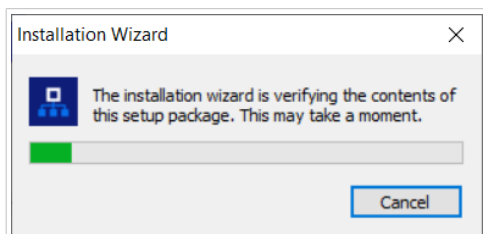


### TIP

When updating to the latest version, do not remove the existing version of NiceLabel 10 manually. The update process removes it automatically and seamlessly installs the latest version. Licensing data is retained and the application is ready to use.

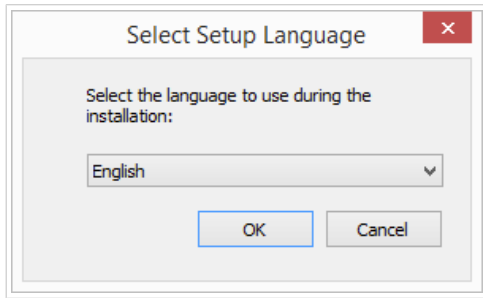
Complete these steps to update your existing version of NiceLabel 10.

1. Download the software package or insert the DVD into your DVD drive. Run **NiceLabel10.exe**. The installer verifies the installation package content.



2. Select installation language from the drop-down list and click **OK**.

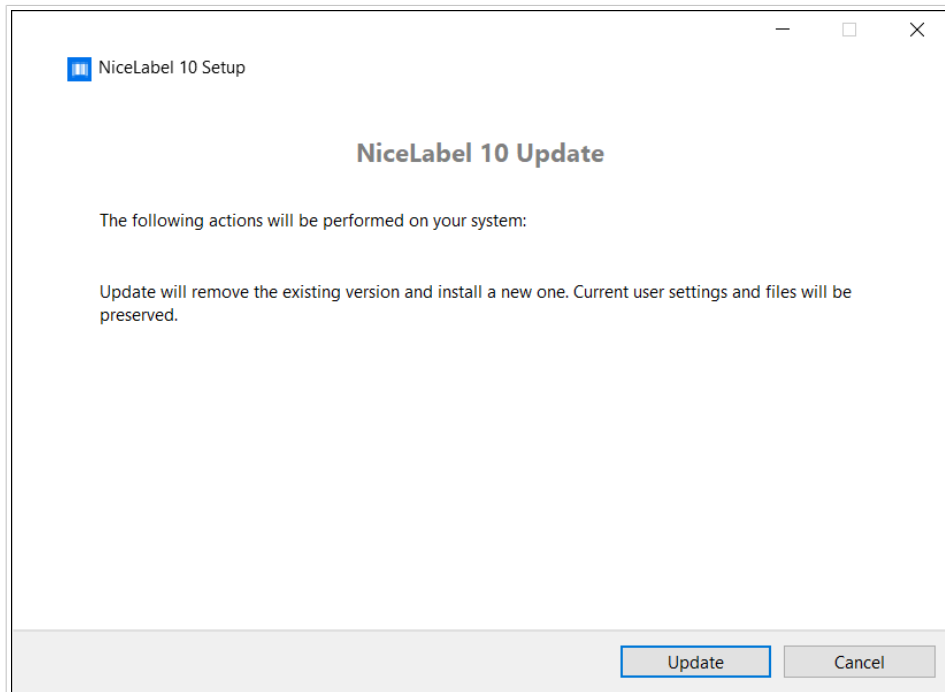




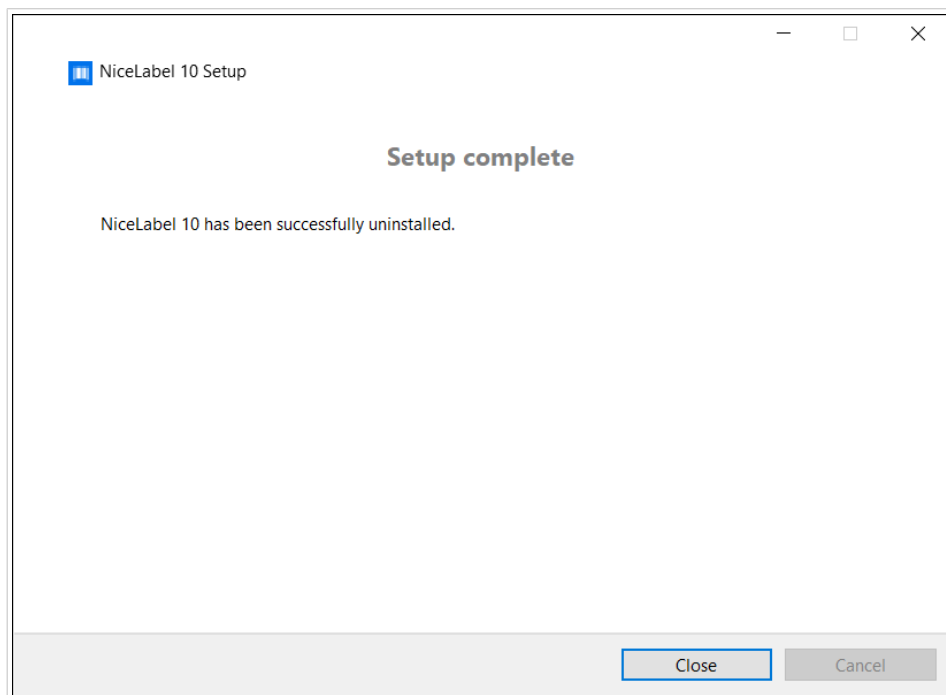
## NOTE

Language selection determines the interface language of the installed NiceLabel 10.

3. NiceLabel 10 Update window appears. Click **Next**.



4. Installer automatically removes existing version.
5. When done, the installer confirms that the latest version is successfully installed. Click **Close** and continue with your work.



## 1.9. Enforcing Configuration Options

Certain application configuration parameters can be stored and retrieved during the installation procedure from the **product.config** file. This is an XML file that among others stores the parameters for language selection, directories, usage tracing, licensing information, and global variables.



### NOTE

After the installation of NiceLabel 10, **product.config** file is stored in folder `c:\ProgramData\NiceLabel\10\`.

The **product.config** file allows you to enforce configuration setting as the application is being installed. Use the **product.config** file from a computer with already installed NiceLabel 10 and deploy it on additional computers.

To do so, follow the steps below:

1. Open NiceLabel 10 Designer.
2. Set the application configuration options (go to **File > Options**) and close it.
3. Copy the **product.config** file from `c:\ProgramData\NiceLabel\10\` next to the installation executable.
4. Run setup. The **product.config** file is automatically copied to the `c:\ProgramData\NiceLabel\NiceLabel 10\` folder.



## NOTE

Configuration options that relate to a specific user profile, override the parameters from **product.config** file.

## 1.10. Silent installation

The silent installation allows you to install NiceLabel 10 without user interaction. The silent way of installing represents a convenient and quick way to streamline the installation process, especially if you are installing NiceLabel 10 on multiple computers in your company, or repeating the installation as part of your information infrastructure maintenance.



## NOTE

Performing silent installation requires a skilled system operator. Use silent installation only if you are familiar with all installation parameters.

To install NiceLabel 10 in silent mode:

1. Open command prompt.
2. Navigate to the folder where you keep the NiceLabel 10 installation file.
3. Run command `NiceLabel10.exe /s`.
4. Wait for a few minutes. Your NiceLabel 10 is ready.

To uninstall NiceLabel 10 in silent mode:

1. Open command prompt.
2. Navigate to the folder where you keep the NiceLabel 10 installation file.
3. Run command `NiceLabel10.exe /s MODIFY=FALSE REMOVE=TRUE UNINSTALL=YES`.
4. Wait for a few minutes. Your NiceLabel 10 is gone.

There are additional useful silent mode installation options that you can use, for example logging, selection of language, selection of installed modules, etc. In all cases, open the command prompt, and navigate to the folder where you store your NiceLabel 10 installation file. See the options [here](#).

## 2. NiceLabel 10 Licensing

There are two licensing models available for NiceLabel 10 :

1. **Single-user license** grants the end-user the right to use one instance of NiceLabel 10 on a single workstation. In this licensing model, the end-user is allowed to use an unlimited number of printers from the workstation with the activated copy of NiceLabel 10 license. Each workstation must be activated with its own unique license key. You must obtain as many license keys as necessary to cover the number of your workstations.



### NOTE

Single user license is available with the following NiceLabel 10 modules: Designer Express, Designer Pro, Designer Pro, and Print.

2. **Multi-user license** allows installation and usage of unlimited instances of NiceLabel 10 on an unlimited number of workstations. In this licensing model, the number of printer seats is limited. The end-users are allowed to use as many printers as purchased with the respective NiceLabel product.



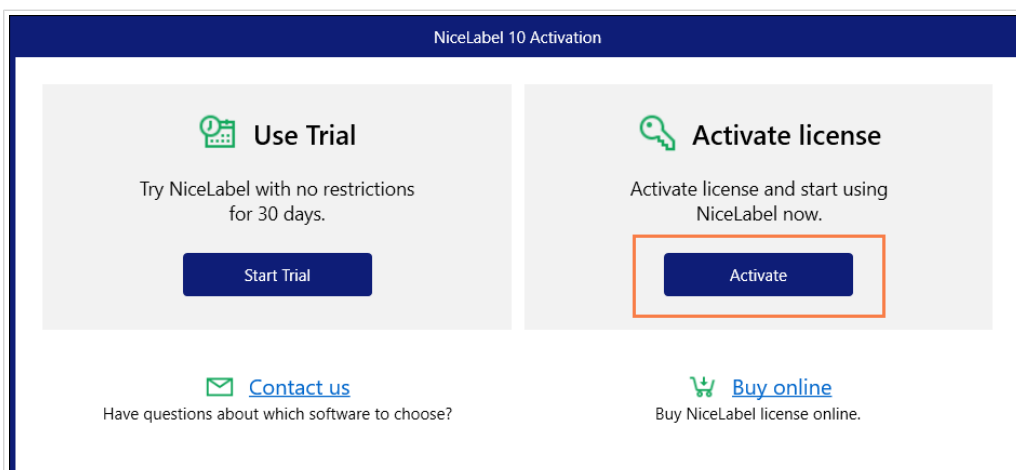
### TIP

Details about NiceLabel 10 licensing are available in a [dedicated document](#).

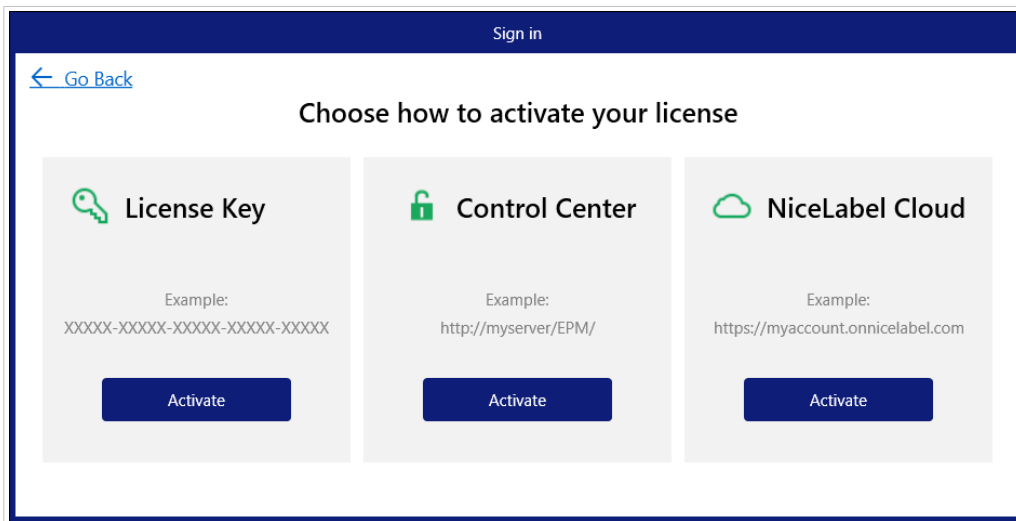
### 2.1. Licensing Options

When you install NiceLabel 10, you can run it in trial mode, or activate your license. Only activated copies of NiceLabel 10 software allow you to work with all included modules without time limitations.

To activate your license, open NiceLabel 10. The **NiceLabel 10 Activation** window opens. Click **Activate**.

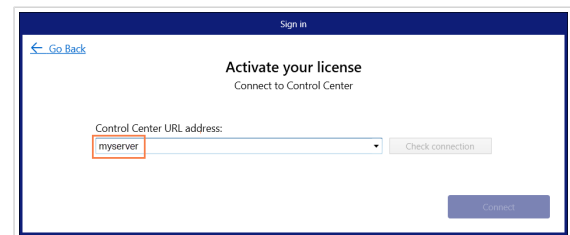
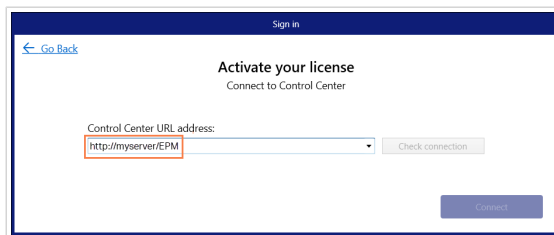


A new window opens with 3 activation options.



Select your activation type by clicking **Activate** under your option:

- **License Key.** Read [Section 2.2, "License Key Activation"](#) for detailed instructions.
- **Control Center.** Type your Control Center URL or your Control Center server name,



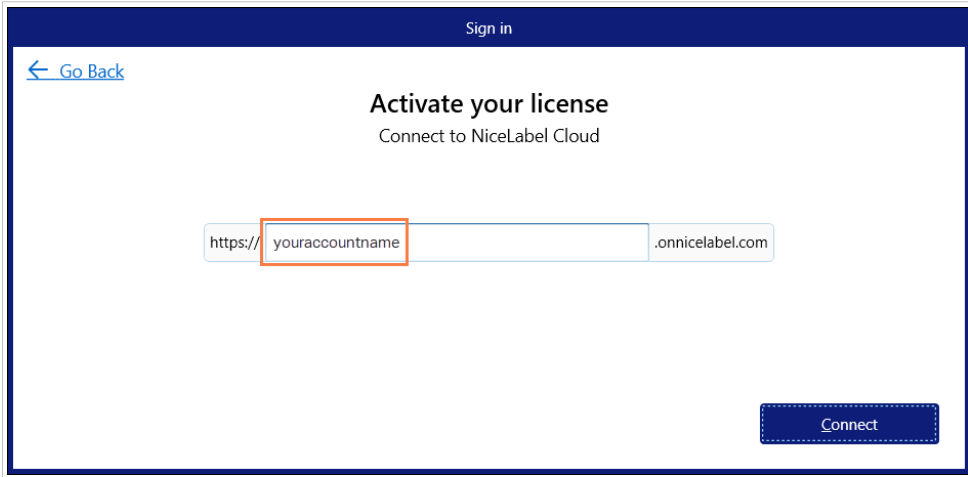
Activate your Control Center license by clicking **Connect**.



#### NOTE

Before you connect to Control Center, you can click **Check connection** to make sure you are able to access the webserver, Control Center, and your Documents.

- **NiceLabel Cloud.** Type your NiceLabel Cloud name and click **Connect** to sign in with your Microsoft or Google account.



Signing in to NiceLabel 10 for the first time activates your license.

## 2.2. License Key Activation



### TIP

Information in this section is valid for the following NiceLabel 10 modules: Designer Express, Designer Pro, Designer PowerForms, Print, and Automation.

You receive the license key after purchasing the software from NiceLabel online store or from any of NiceLabel software distributors. To activate your copy of NiceLabel 10, open the [Section 2.2.1, “License Activation Dialog”](#) and use the received license key.



### NOTE

By activating your copy of NiceLabel 10, the software also becomes registered. Registration guarantees full customer support as defined in the product license agreement.

With any NiceLabel 10 product open, the [Section 2.2.1, “License Activation Dialog”](#) window appears after clicking the **Activate your License** button in Designer or Automation **Home tab ribbon > Trial group** or in **File tab > About**.

### 2.2.1. License Activation Dialog

To activate and register your NiceLabel 10 license, complete the following steps:

1. Activate the license activation dialog in **File > About > Activate Your License**. The dialog window contains the following edit fields:
  - **License Key:** Copy and paste the 25-digit key that you received after purchasing the software.



## NOTE

After purchasing the Runtime license, you only activate this license type in NiceLabel Print. If you try to activate Runtime license in Designer or Automation, the license is not recognized as valid.

- **Name:** Type your name. The name is used when addressing possible support issues and also used to identify the owner of label or solution design.
- **Company:** Company name helps identify upgrade requests and possible support issues.
- **Country/region:** Defines macro location of the company HQ or its office.
- **Email:** User email used for support purposes or addressing possible issues.
- **Notify me about future software updates:** Keeps you informed about the regular updates of NiceLabel 10 products.
- Use the Activate offline link [if your computer is offline](#).

Sign in

[← Go Back](#)

### Activate your license

License Key:

Name:

Company:

Country/region:

Email:

Notify me about software updates

By submitting this form you agree to our [privacy policy](#).  
Internet connection is required. [Activate offline](#) if the internet is not available.

### Preloading the activation information

To speed up the license activation process, you can preload your user information using command-line parameters or the `product.config` file.



## NOTE

The procedures below are for experienced administrators only.

To preload licensing user information using command-line:

1. Open command prompt.
2. Navigate to the folder where you keep the NiceLabel 10 installation file.
3. Run command `NiceLabel10.exe` and add parameters for the activation information edit fields. Use syntax from the example below.

## Example

```
NiceLabel10.exe LICENSECODE=12345abcde12345abcde12345
ACTIVATIONNAME=yourname ACTIVATIONCOMPANY=yourcompany
ACTIVATIONCOUNTRY=United States
ACTIVATIONEMAIL=youremail@nicelabel.com
ACTIVATIONUPDATESNOTIFICATION=TRUE
```

To preload the user licensing information using your `product.config` file:

1. Install a fresh copy of NiceLabel 10 on any of your computers. Make a copy of the NiceLabel 10 `product.config` file for editing. The file's default location is `%PROGRAMDATA%\NiceLabel\NiceLabel 10`.
2. Edit the copy of the `product.config` file. The file has an XML structure. Add user licensing info items in the `<Activation>...</Activation>` node:
  - `<LicenseKey>...</LicenseKey>`
  - `<Name>...</Name>`
  - `<Company>...</Company>`
  - `<Country>...</Country>`
  - `<Email...</Email>`
  - `<UpdatesNotification>...</UpdatesNotification>`

### Example:

```
<?xml version="1.0" encoding="utf-8"?>

<Configuration>

<Common>

...

</Common>

<Activation>

    <LicenseKey>ABCDE12345ABCDE12345ABCDE</LicenseKey>

    <Name>John</Name>

    <Company>Doe</Company>
```



```
<Country>United States</Country>

<Email>john.doe@nicelabel.com</Email>

<UpdatesNotification>True</UpdatesNotification>

</Activation>

</Configuration>
```

3. Store the `product.config` next to the NiceLabel 10 installation file. This can either be a folder on a computer, on a shared network drive, or on a USB drive. Use a location that makes your installations convenient.
4. Run the installation file. During the license activation, the user information populates automatically.
2. When done with entering the required information, click **Activate Your License**. The activated NiceLabel 10 product becomes fully functional in accordance with the provided license key.

## 2.2.2. Offline Activation



### TIP

Use this option when activating NiceLabel 10 on a computer without an Internet connection.

1. Click the **activate offline** link. The activation dialog window expands.

Activate offline if the internet is not available.' The 'Activate' button is highlighted with a dashed border."/>

Sign in

[Go Back](#)

### Activate your license

License Key:

Name:

Company:

Country/region:

Email:

Notify me about software updates

By submitting this form you agree to our [privacy policy](#).  
Internet connection is required. [Activate offline if](#) the internet is not available.

Now, it includes two additional fields – **Registration Code** and **Activation Code**.

NiceLabel 10 Activation

[← Go Back](#)

### Activate your license

License Key:  ✓

Name:

Company:

Country/region:

Email:

Notify me about software updates

Registration Code:

Activation Code:  ✓

Activation code is required for offline activation. Use a device with Internet connection to get the key on NiceLabel Activation web page, or call NiceLabel support.

**To get the Activation code using a mobile device:**

- [Click here](#) to open a window that displays barcode. Scan it using a mobile device with Internet access.
- Enter the code in the Activation code field.

**To get the Activation code using a computer with Internet connection:**

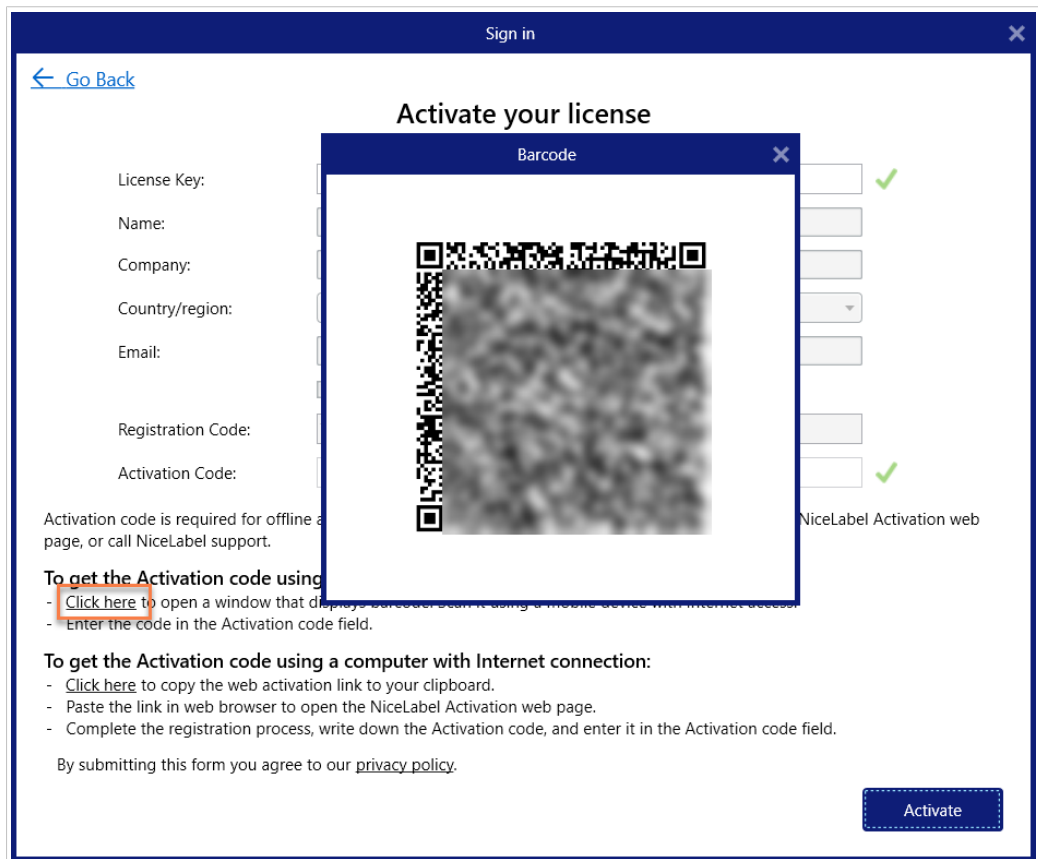
- [Click here](#) to copy the web activation link to your clipboard.
- Paste the link in web browser to open the NiceLabel Activation web page.
- Complete the registration process, write down the Activation code, and enter it in the Activation code field.

By submitting this form you agree to our [privacy policy](#).

[Activate](#)

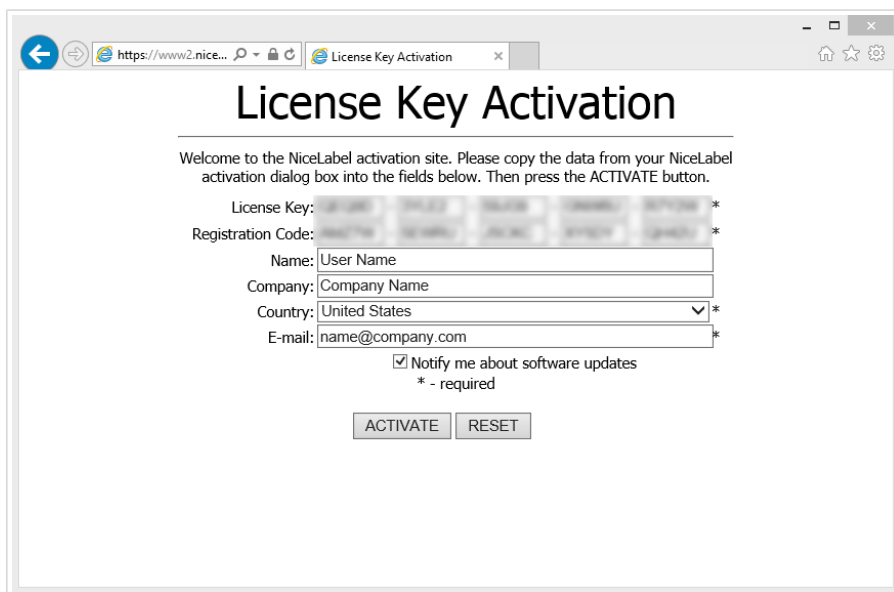
- **Registration code** generates the **Activation code** on the dedicated **NiceLabel License Key Activation** web page. This page is accessible in two ways:

1. **License Key Activation** web page is accessible via barcode. Click the link in first paragraph to open a separate window with the code. Scan it using a mobile device with Internet connection and you will be directed to the web page using your mobile browser. Enter the received Activation code (see image below) in the matching field of NiceLabel 10 activation dialog.



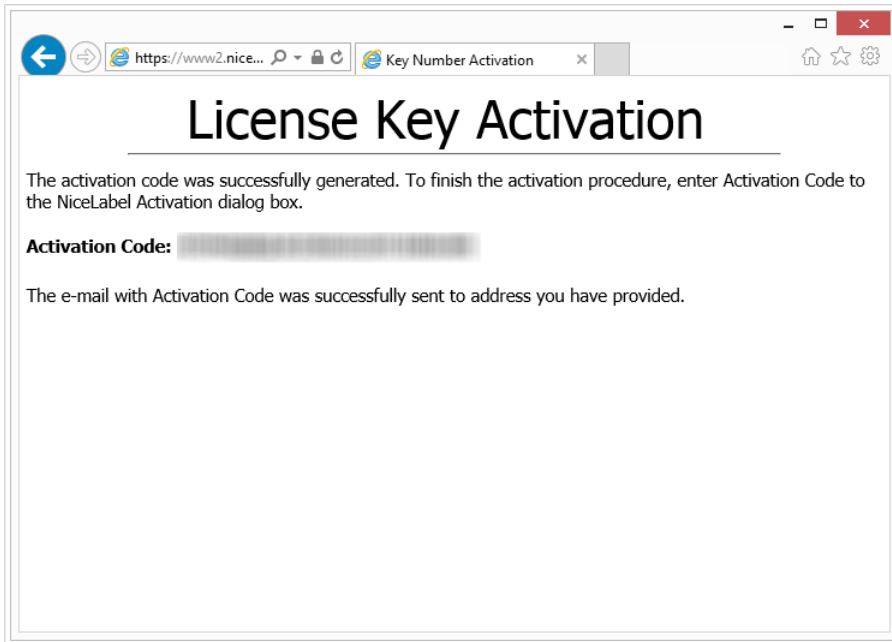
2. To access the License Key Activation web page on another computer with Internet access, click the link in the second paragraph. This action copies the **License Key Activation** web page link to the clipboard. Open this link on a computer with Internet connection.

After the activation web page opens, the fields with information about your license are automatically populated.



Click **Activate** to generate the **Activation Code**.

Use **Activation Code** on the computer without Internet access to activate the software.



#### NOTE

Do not close the license activation dialog while obtaining the **Activation Code** on another computer with Internet access. If you close it, you will have to repeat the procedure with a new **Registration Code**.

- For a pure offline activation, call NiceLabel support. Activation code will be generated using the provided **Registration Code**.
2. Copy and paste the received **Activation Code** and click **Activate Your License** to start using the activated copy of NiceLabel 10.

## 2.3. License Upgrade



#### TIP

Information in this section is valid for the following NiceLabel 10 modules: Designer Express, Designer Pro, Designer PowerForms, Print, and Automation.

License upgrade procedure does not require any software (re)installation procedures. Continue with the current version of NiceLabel 10 installed.

To upgrade an existing license, the following two keys are required:

- 25-digit license key of the installed edition. You received this key after purchasing your copy of NiceLabel 10.
- 25-digit software upgrade key. This key upgrades your current edition of NiceLabel 10.

After the upgrade, the "old" software key becomes deactivated.



### TIP

NiceLabel 10 licenses (LMS) can also be centrally managed using NiceLabel Control Center. See the dedicated Control Center installation guide for details.

## 2.3.1. Upgrade Types

There are three types of upgrades available for NiceLabel 10. They are all described in the following sections:

- [Section 2.3.2, "Product Edition Upgrade"](#): This type of upgrade expands the amount of product features and widens the possibilities of use.
- [Version Upgrade](#): If you are updating from the previous to the current major version (release), use this upgrade type.
- [Section 2.3.4, "Upgraded Number of Printers"](#): The use of NiceLabel 10 products is licensed per connected printers. This type of upgrade expands the permitted number of printers to be used with the software.

License upgrade is normally done online. In cases when Internet access is not available, follow the offline upgrade steps in [section Section 2.3.5, "Offline Upgrade"](#).

## 2.3.2. Product Edition Upgrade

When upgrading to a higher edition of NiceLabel 10 software, for example from Designer Express to Designer Pro, you keep the existing product installed on your computer. Installation and activation of the alternative edition is done on top of the existing one.

1. Go to **File (backstage) tab > About**.
2. Click **Upgrade License**. The upgrade license dialog window appears:
  - **License Key**: Field is automatically populated with the existing license key.
  - **Upgrade Key**: Enter the upgrade key.

3. Click **Upgrade License**. Your copy of NiceLabel 10 product has been upgraded. See the new **License** in **About > License Information**.

### 2.3.3. Version Upgrade

Due to constantly improving NiceLabel applications, we recommend that you upgrade your copy to the latest product version. Contact your NiceLabel reseller to receive the upgrade key.



#### NOTE

When purchasing version upgrade, always give your NiceLabel reseller the license key of your current version.



#### NOTE

If you are upgrading version and increasing the number of permitted printers at once, make sure you upgrade the version first. See the steps below. When done, continue upgrading the number of printers. See the procedure in section [Upgraded Number of Printers](#)).

There are two upgrade cases:

- You can upgrade the existing installation on a single or multiple computers.
- You can install NiceLabel 10 on a clean computer and use the upgrade key for activation.



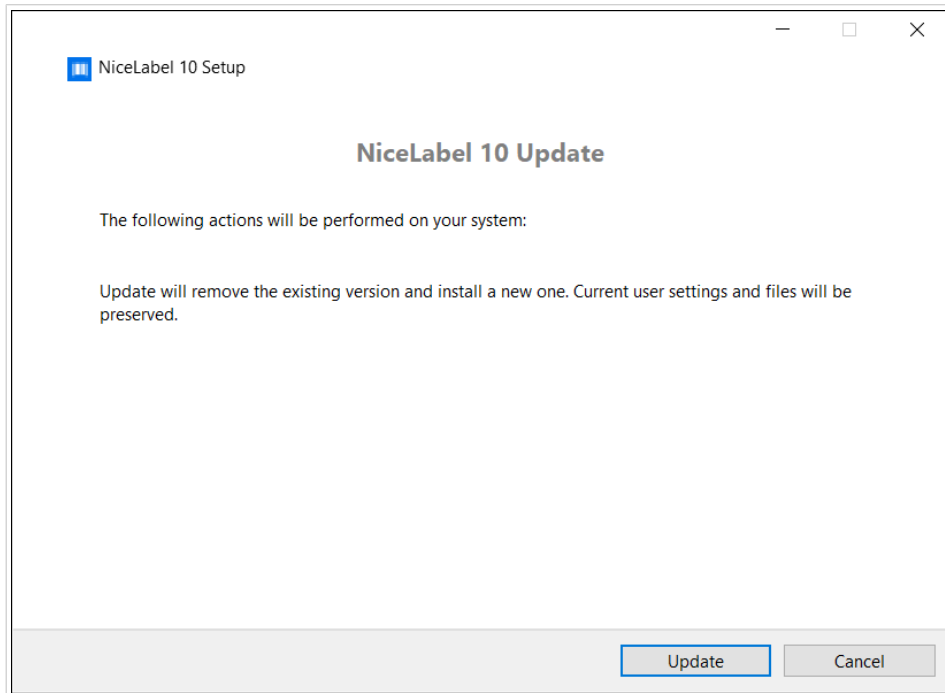
#### TIP

When installing NiceLabel 10 on multiple computers, it is recommendable to make the installations uniform. NiceLabel 10 installer allows you to predefine language selection, directories, usage tracing, licensing information, and global variables. The procedure is available in the section [Enforcing Configuration Options](#).

#### 2.3.3.1. Upgrading the existing installation

If you have your existing installation(s) activated with a single-user or multi-user NiceLabel license, perform the upgrade using these steps:

1. After receiving the **Upgrade Key** from your NiceLabel reseller, [download](#) and run the NiceLabel 10 installation file.



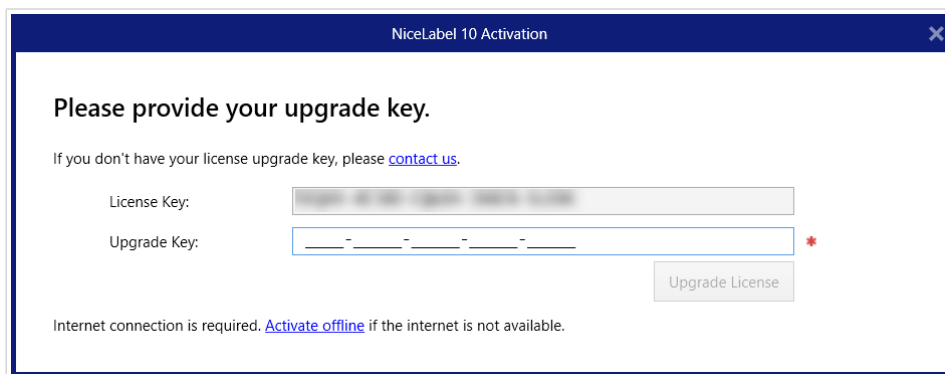
Click **Update**. Installer removes your current version and installs the latest.



#### NOTE

Current user settings, files and activation information remain preserved during the upgrade.

2. Click **Close** when the setup procedure ends.
3. Run NiceLabel 10 . The **NiceLabel 10 Activation** window opens. The License Key field is already populated with your license key from the previous version. Copy and paste the **Upgrade Key** from the email you received from your NiceLabel reseller.



4. Click **Upgrade License**. Now, the upgrade of your NiceLabel 10 is done. See the new **License** in **About > License Information**.

### 2.3.3.2. Installing and activating NiceLabel 10 with upgrade key

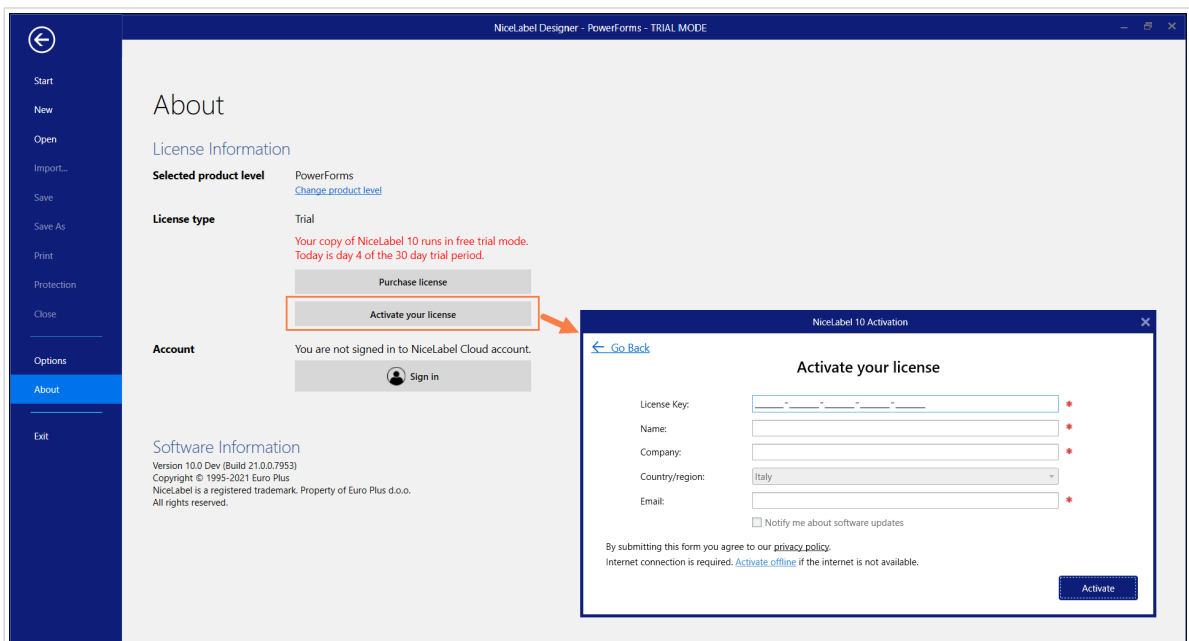
If you have a multi-user NiceLabel license, you might want to install and activate NiceLabel 10 on additional computers with the upgrade key.

1. After receiving the **Upgrade Key** from your NiceLabel reseller, [download](#) and run the NiceLabel 10 installation file.
2. Complete the [Free Trial Setup](#).
3. When done, go to **File > About** and click **Activate your license**. The **NiceLabel 10 Activation** window opens.
4. Copy and paste your **Upgrade Key** to the **License Key** field.

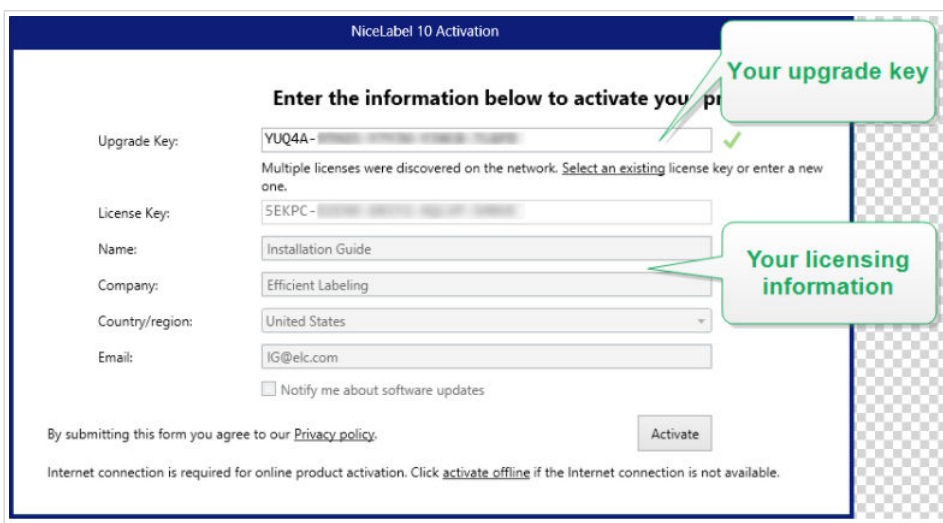


## NOTE

You must not paste your "old" license key in the **License Key** field. Please use the upgrade key for NiceLabel 10 .



The NiceLabel 10 Activation fields adapt to the pasted upgrade key automatically. These fields display the licensing information that you used while activating your copy of previous version.





5. Click **Activate**. Activation is complete. Click **OK** to restart NiceLabel 10 and start working.

### 2.3.4. Upgraded Number of Printers

This type of upgrade allows you to increase the permitted number of printers that are used for label printing. Complete the below-described steps.



#### TIP

The upgraded number of printers allows you to follow the pay-as-you-grow pricing model. Printing capacity needs to grow along with the growth in business – upgrade the license only when needed. Complete the procedure below to gain access to the additional number of permitted printers.

1. Open any NiceLabel 10 product.
2. Go to **File (backstage) tab > About** and click **Upgrade License**.
3. NiceLabel 10 license activation dialog window opens.
  - **License Key:** The field is already populated with the currently used **License Key**.
  - Enter the purchased **Upgrade Key**.

4. Click **Upgrade license**. The number of permitted printers has been expanded. See the new **License** in **About > License Information**.

### 2.3.5. Offline Upgrade



#### TIP

Use this option when performing an upgrade on a computer without Internet connection.

1. Go to **File (backstage) tab > About**.

2. Click **Upgrade License**. The upgrade license dialog window appears. **License Key** field is automatically populated with current license key.
3. Click the **activate offline** link. The activation dialog window expands.

Now, it includes additional two fields – **Registration Code** and **Activation Code**:

- **Registration code:** Automatically generated 25-digit code which identifies the purchased copy of the software. Use the registration code in two ways:
  - **Registration code** generates the **Activation code** at a dedicated license upgrade web page. To access the license upgrade web page on another computer with Internet access, click **Copy the link**. This action copies the link to license upgrade web page to clipboard. Open this link on a computer with Internet connection. When you open the license upgrade page, the fields with information about your license are automatically populated. Click **Activate** to generate the **Activation Code**.

License Upgrade

Welcome to the NiceLabel activation site. Please copy the data from your NiceLabel activation dialog box into the fields below. Then press the ACTIVATE button.

Old Key: [ ] - [ ] - [ ] - [ ] - [ ] \*

Upgrade Key: [ ] - [ ] - [ ] - [ ] - [ ] \*

Registration Number: [ ] - [ ] - [ ] - [ ] - [ ] \*

Name: User Name

Company: Company Name

Country: United States

E-mail: name@company.com

Notify me about software updates  
\* - required

ACTIVATE RESET

Use **Activation Code** on the computer without Internet access to activate the upgrade.

License Upgrade

The activation code was successfully generated. To finish the activation procedure, enter Activation Code to the NiceLabel Activation dialog box.

**Activation Code:** [blurred code]

The e-mail with Activation Code was successfully sent to address you have provided.



#### NOTE

Do not close the license activation dialog while obtaining the **Activation Code** on another computer with Internet access. If you close it, you will have to repeat the procedure with a new **Registration Code**.

- For a pure offline activation, call NiceLabel support. Activation code will be generated using the provided **Registration Code**.
4. Click **Upgrade license**. The number of permitted print printers has been expanded. See the new **License** in **About > License Information**.

# 3. Installation of Printer Drivers

For detailed and printer vendor/model-specific instructions on how to install the printer drivers, please refer to the document [NiceLabel Printer Drivers Installation Guide](#).



## NOTE

Before starting with printer driver installation, make sure you are logged in as a user with permission to install the driver.

# 4. Deactivating Software

When using the NiceLabel 10 software activated with a software license key, you can deactivate it and move the license to another workstation.



## NOTE

With NiceLabel multi-user products, you can install an unlimited number of NiceLabel clients. The license unit for NiceLabel multi-user products is a printer seat. Each unique printer that you use for label printing consumes one license.

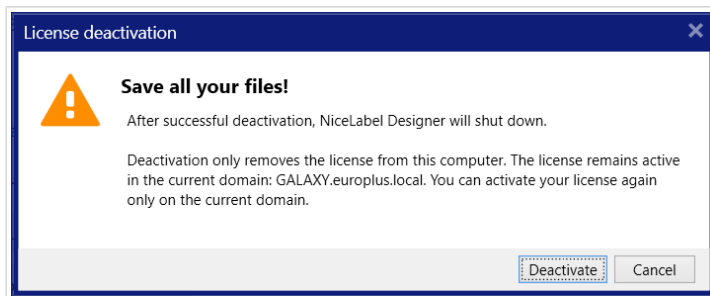
More details are available in the following sections:

- [Section 4.1, “License Deactivation Procedure”](#)
- [Section 4.2, “Moving the Software License to Another Computer”](#)

## 4.1. License Deactivation Procedure

To deactivate the NiceLabel license, do the following:

1. Start any NiceLabel 10 program.
2. Go to **File > About** and click **Deactivate License**. License deactivation warning window opens.



3. Click **Yes** to deactivate the license or **Cancel** to abort the deactivation procedure.
4. The single-user license has been deactivated and can be again activated on another workstation.



## TIP

Another possibility to deactivate NiceLabel 10 is to uninstall it. During the removal process, you will be prompted whether you want to remove the license or not.

## 4.2. Moving the Software License to Another Computer

NiceLabel 10 runs on every workstation on which it has been activated. The software can be activated using a software or hardware key (license key stored on a USB drive).

### 4.2.1. Moving Hardware Activation

To move the hardware key to another computer, complete the following steps:

1. Disconnect the USB hardware key from your computer.
2. Install NiceLabel 10 on the new computer. See section [Section 1.2, “Introductory Setup Steps”](#)
3. Plug the USB drive to another computer. The installed copy of NiceLabel 10 is active.

### 4.2.2. Moving Software Activation

To move the license to another computer using a **software key**, complete the following steps:

1. Run any NiceLabel 10 product on the currently active computer.
2. Go to **File > About** and click **Deactivate License**
3. Select the option **Deactivate License**. Follow the procedure as defined in section [Section 4, “Deactivating Software”](#) Selecting this option removes the license from your computer and stores it back on the activation server.



#### NOTE

The computer must have access to the internet to be able to transfer the license back to the activation server.

4. Install the software on the new computer. See section [Section 1.2, “Introductory Setup Steps”](#).
5. Activate the software on the new computer. See section [Section 2.2, “License Key Activation”](#).