

# Eclipse Machine Settings Backup and Restore

## Machine Settings.

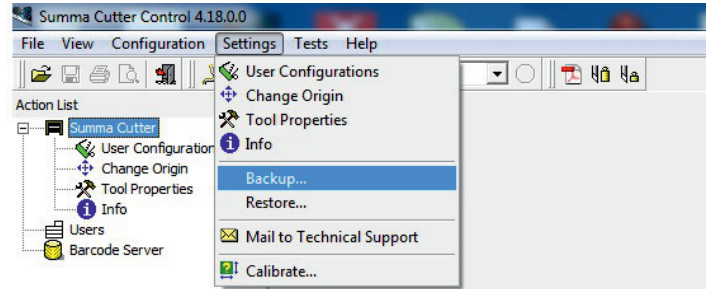
Each Eclipse Label finisher has settings that configure each machine, these include settings like the scale calibration, cutting velocity and many others .

Occasionally setting like OPOS calibration may need to be reset so taking a backup of these setting is important to do before and after any changes to these settings are done.

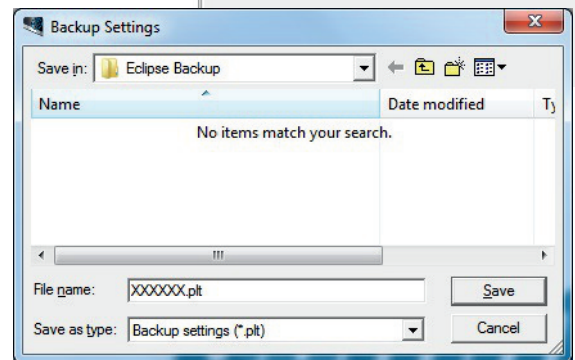
Always keep a current copy of the machine setting in a safe location.

## Backing Up.

Start Summa Cutter Control (SCC), from the top menu select 'Settings' followed by 'Backup..' (see right).

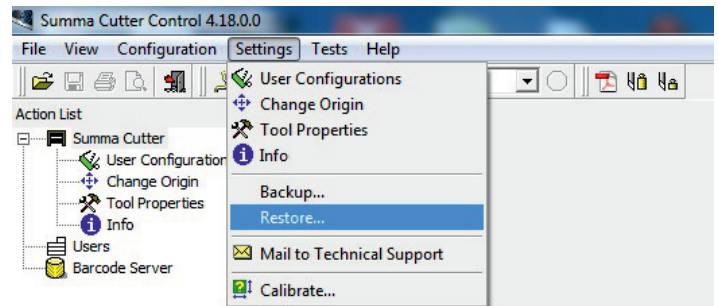


The Backup Settings dialogue box will appear and from here choose a backup location, name the file and click 'Save'.



## Restore.

Start Summa Cutter Control (SCC), from the top menu select 'Settings' followed by 'Restore..' (see right).



The Restore Settings dialogue box will appear and from here choose the location of the .plt file and click 'Open'. The setting will be restored after a few seconds.

