

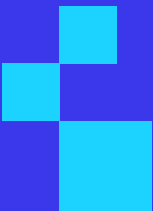


# Loftware NiceLabel Product Line Overview

Loftware is a leading global provider of Labeling and Artwork Management solutions that help companies of all sizes improve the quality, speed and efficiency of their labeling, while reducing cost.

The Loftware NiceLabel product line offers powerful labeling solutions that manage the entire labeling process - whether you have 5 printers or 500, deploy on-premise or in the Cloud, we've got a labeling solution that fits your business requirements:

- Loftware NiceLabel labeling platform
- Loftware NiceLabel desktop solutions (Designer & PowerForms)



# Loftware NiceLabel labeling platform

Manage your entire labeling process on one powerful labeling platform.

The NiceLabel labeling platform offers an intuitive and comprehensive way to design and print labels. It helps businesses of all sizes manage labeling, from label design to print and every step in between.

Designed to grow as your business needs to expand, the NiceLabel platform offers an easy way to start with one location and expand to multiple sites. Or to start with an on-premise deployment and easily move to cloud later on.



## NiceLabel platform fundamentally transforms legacy approaches to labeling

### Challenges of legacy labeling

- ⊖ Disparate and fragmented applications
- ⊖ IT dependency for label design
- ⊖ Labor intensive quality assurance
- ⊖ Slow change management and deployment
- ⊖ High risk of printing errors

VS

### Benefits of the NiceLabel platform

- ✓ Standardized all-in-one platform
- ✓ Agile design by business users
- ✓ Streamlined digitalized quality assurance
- ✓ Instant web deployment of standardized printing
- ✓ Accurate printing from a single source of truth

### Reduce IT Costs

- ✓ Empower your business users to design and approve labels
- ✓ Integrate with your business systems using pre-built connectors
- ✓ Minimize IT support and infrastructure investments

### Reduce the cost of quality control

- ✓ Digitally transform your quality assurance process with our document management system
- ✓ Eliminate the time your quality control people spend on paper-based processes
- ✓ Eliminate the cost of errors from legacy approaches

### Faster time to market

- ✓ Make label change requests faster and improve your customer responsiveness
- ✓ Eliminate error and unplanned downtime to ship products faster

Our customers typically get ROI in less than

**6 months**

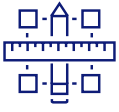


82% of our customers experienced cost savings due to error reduction



76% of our customers say they have reduced time-to-market

# The four elements of the Loftware NiceLabel labeling platform



## Label designer

The NiceLabel designer delivers a familiar Microsoft Word-like user experience that enables anyone to quickly design labels. It moves label design out of the IT department and into the hands of business users.

- ✓ Improved speed and flexibility in making label changes
- ✓ Streamlined compliance with regulatory requirements
- ✓ Faster global optimization and expansion into new markets
- ✓ Streamlined work and processes by using one platform for printing labels and documents in the warehouse



## On-Demand printing

With our web printing system, you can centrally deploy and manage all manual printing applications to multiple sites, locations and third-party suppliers, contractors and vendors with a single click.

- ✓ Instantly deploy consistent applications and labeling while reducing IT costs
- ✓ Extend standardized labeling to suppliers to avoid relabeling goods received
- ✓ Immediately roll out label and application updates across all locations without IT assistance



## Document Management System

Think of it as SharePoint for labeling. Design, review, approve and control labeling from a web application without having to install software on workstations.

- ✓ Secure centralized storage eliminates duplication
- ✓ Automatic document versioning provides transparency
- ✓ Template consolidation leads to more efficient operations
- ✓ Unique indexing and search help reduce duplications
- ✓ Secure, electronic approval workflows prevent unauthorized changes
- ✓ Label comparison provides quality assurance
- ✓ Role-based access control ensures a secure labeling process
- ✓ Web-Based printer management simplifies printer administration and reduces demands on IT



## Integrated Printing System

Integrate label printing with SAP or other business systems to increase label accuracy, printing efficiency and establish a 'single source of truth' for your labeling data.

- ✓ Ensure accuracy and efficiency by interfacing with your master data
- ✓ Build integrations without coding using our intuitive graphical integration builder
- ✓ Integrate with SAP seamlessly and quickly using the NiceLabel ABAP package
- ✓ Trigger labeling from integrations with any existing business system
- ✓ Configurable filters support all modern and legacy data formats, eliminating the need to customize your existing business applications
- ✓ Actions for building business rules and workflows allow you to easily adapt business logic
- ✓ Optimize printing performance and efficiency with the next-generation 64-bit print server

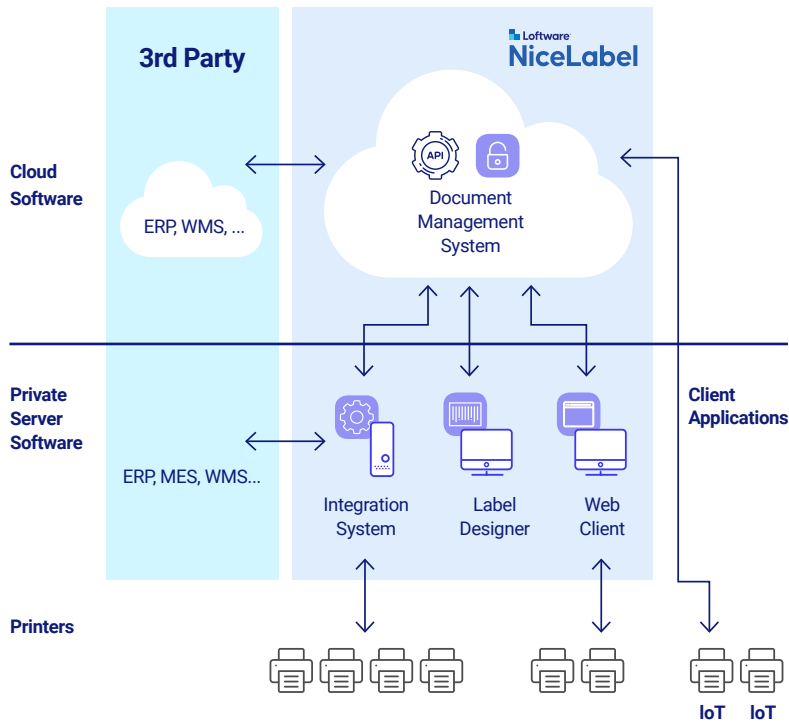
## Deployment options

### SaaS / Cloud

Software NiceLabel Cloud is a public cloud edition of the NiceLabel labeling platform. It is multi-tenant and hosted in the Microsoft Azure cloud. It is our out-of-the-box service that requires no IT infrastructure, installation or IT support.

### Perpetual / On-premise

LMS Enterprise is an on-premise edition of Software NiceLabel labeling platform that is hosted on your own IT infrastructure.



NiceLabel Cloud system architecture

## Products and editions

On-premise	Cloud
> LMS Pro	> Essentials
> LMS Enterprise	> Business
	> Compliance

[www.nicelabel.com](http://www.nicelabel.com)

## Professional Services Group

### Let us help you transform your labeling

We recognize that labeling is a critical part of your business, and that your labeling system needs to meet your business' unique system, business and regulatory requirements. Software's Professional Services Group (PSG) team of trained industry professionals offer services tailored to your company and industry. PSG works with you to ensure your system is configured and implemented according to best practices. They ensure a smooth and efficient transformation of your labeling.

## Software Maintenance Agreement

### Avoid unplanned downtime

The NiceLabel Software Maintenance Agreement (SMA) offers enhanced support and free software upgrades to Software customers. We offer two levels of SMA support - designed for customers of any size, and in any geographic location.

- ✓ Priority access to Software technical experts who will work with you to quickly address issues and minimize interruptions to your business.
- ✓ Free software upgrades, ensuring that you have the latest technology at your fingertips and a lower total cost of ownership.

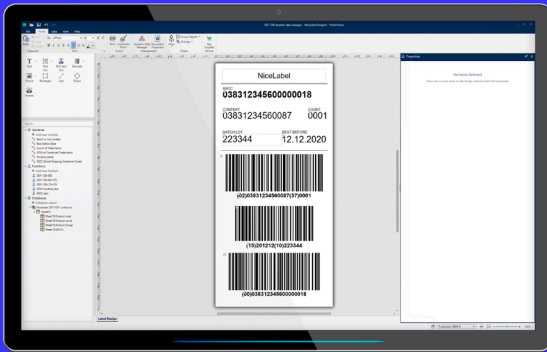
## Channel Partner support

Software is proud to be working with a global community of trained, professional partners, who can support our customers on the ground. The members of our Partner Program offer professional services and ongoing technical support, all in your local language, backed up by the Software technical support team. They can also offer you printers, media, scanners and mobile computers to complete your solution.

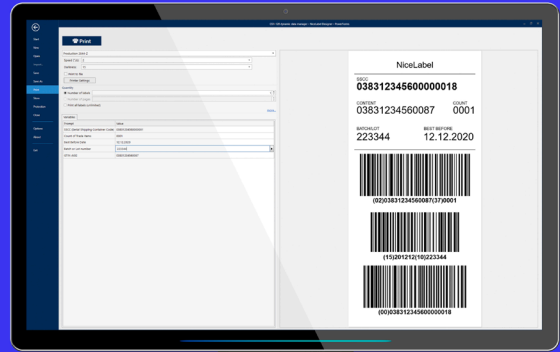
# Designer

Quickly design and print barcode labels without IT help

NiceLabel Designers help you quickly design labels and create an efficient printing process. Quickly produce professional labels without making investments in training and coding.



Design interface



Operator printing interface

## Design Module

Our label designer makes it easy for anyone to design labels. It's graphical design features enable users to create labels in minutes, no coding skills or training necessary.

- ✓ Design customer-specific or regulatory-compliant label templates in no time
- ✓ Familiar, Microsoft Word-like user experience requires minimum training and IT skills
- ✓ Pre-designed templates accelerate your design process
- ✓ Universal template prints to any printer
- ✓ Support for multiple languages
- ✓ Fast and simple database connectivity (Excel, Access, SQL Server, Oracle and MySQL, OLE DB and ODBC)
- ✓ Built-in functions to automate creation of label information, such as serial numbers, expiry dates, etc.

## Print Module

Printing the right label template with the right data is business-critical. Our label printing module makes it easy to avoid human error and print accurate labels every time.

- ✓ Everything you need to print in one form
- ✓ Locked templates prevent errors
- ✓ Print preview enables the operator to check all information before printing
- ✓ Responsive form layout allows for greater flexibility

## Products and editions

	Designer Express	Designer Pro
Label Designer	> Basic	> Full featured
Database connectivity	> Excel, csv	> All databases
Manual printing	> Pre-defined printing forms	> Adaptable printing forms

[Download free trial](#)

[www.nicelabel.com/designer](http://www.nicelabel.com/designer)

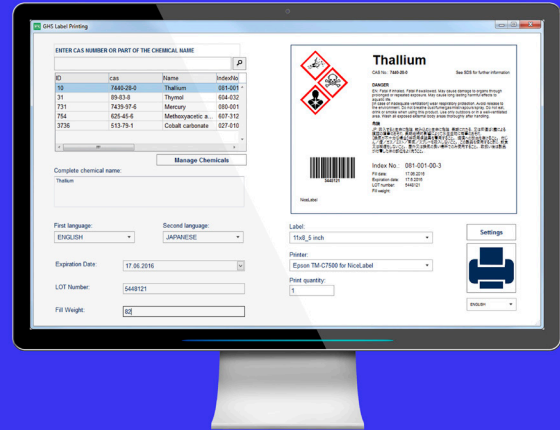
[Watch videos](#)

# PowerForms

## Streamline your labeling and improve print productivity

NiceLabel's software suite helps you quickly design dynamic label templates and optimize the efficiency and accuracy of the printing process.

Eliminate printing errors by adapting the printing interface to the user and process or by integrating labeling with your existing applications and master data.



## Application Builder

Businesses can significantly reduce manual printing effort and achieve new levels of accuracy and control by using PowerForms' unmatched on-demand print capabilities. PowerForms' features empower business users to create custom printing applications, streamline complex printing processes and eliminate errors.

- ✓ Prevent printing errors
- ✓ Simplify the print process for non-skilled workers
- ✓ Streamline complex printing processes
- ✓ Maintain label integrity
- ✓ Minimize manual data entry
- ✓ Responsive, touchscreen-ready interface

## Integration / Automation

Automation empowers you to streamline complex printing processes, eliminate errors and improve print productivity. Integrate printing with existing business systems and hardware devices such as PLCs or weight scales.

- ✓ Integration without coding
- ✓ Works with all printers
- ✓ Data mapping
- ✓ Unmatched performance and reliability
- ✓ Business rules for maximum flexibility

## Products and editions

	PowerForms	PowerForms Suite
Label Designer	> Full featured	> Full featured
Database connectivity	> All databases	> All databases
Manual printing	> Application builder	> Application builder
Integrated printing		> Integration System